

# FITFLEET-EXCAVATOR-500HR-CVA

## PM Checklist

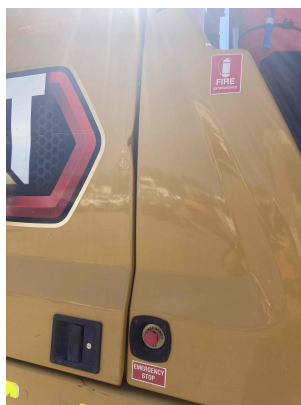
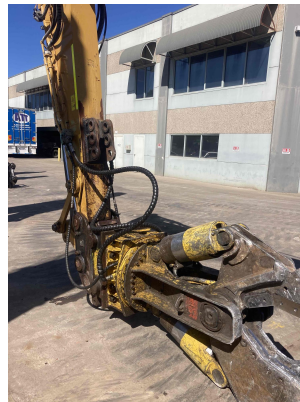
● 0 ● 0 ● 111 ● 11

Inspection Number	19882920	Customer No	2969824372
Serial Number	KFE10070	Customer Name	AUSTRALIAN HAMMER SUPPLIES HIRE PTY LTD
Make	CATERPILLAR	Customer Email	hirebookings2@hammer hire.com.au
Model	320	Work Order	SC72677
Equipment Family	Medium Hydraulic Excavator	Completed On	11/11/2024 11:59:38 AM
Asset ID	AHSH137	Inspector	Collin Graham
SMU	2505 Hours	PDF Generated On	11/11/2024
Location	44A Wharf Rd, Melrose Park, New South Wales 2114, Australia	Coordinates	0, 0, 0
Technician			

## General Info & Comments

### ● General info/Comments

NORMAL



**TASK SAFETY INSTRUCTIONS - Revision Number: 02 Date: 25th September 2023**

- |  |      |
|--|------|
| ● 1.1 Wear Correct PPE at all times  | PASS |
| ● 1.2 All isolation and safe work procedures must be followed                      | PASS |
| ● 1.3 Identify task hazards and controls utilising hierarchy or controls model     | PASS |
| ● 1.4 Ensure a competent operator and spotter is utilised to move mobile equipment | PASS |
| ● 1.5 Ensure all mobile equipment is fundamentally stable                          | PASS |
| ● 1.6 Ensure three points of contact is maintained during access and egress        | PASS |
| ● 1.7 Ensure acceptable housekeeping standards are maintained at all times         | PASS |

**MACHINE GENERAL RUNNING CHECKS**

- |   |      |
|---|------|
| ● 2.1 Check all work lights, beacon & reverse alarm for operation                   | PASS |
| ● 2.2 Test all dash warning lights, gauges and audible alarms for correct operation | PASS |
| ● 2.3 Check idle timer for correct shut down operation                              | PASS |
| ● 2.4 Check operation of all three emergency stop buttons                           | PASS |
| ● 2.5 Check operation of horn   | PASS |
| ● 2.6 Check operation of reverse camera   | PASS |
| ● 2.7 Check alternator charge voltage - ACTUAL_____V                                | PASS |
| ● 2.8 Check operation of auto grease system by manually activating timer            | N/A  |
| ● 2.9 Check fire system control panel for 'Normal'                                  | N/A  |

●	2.10 Test hydraulic lock out function operation	PASS
●	2.11 Check window wiper and washer operation	PASS
PM SAFETY GENERAL INSPECTION		
●	3.1 Visually ensure all guards, shields and covers are in place and in good condition to ensure personal are protected from rotating parts	PASS
●	3.2 Check condition of machine identification signage	PASS
●	3.3 Inspect ROPS/FOPS condition	PASS
PM BRAKING SYSTEM		
●	4.1 Test travel brakes – Ensure the machine comes to a stop when travel controls are released	PASS
●	4.2 Test travel brakes – Ensure the brakes hold on a suitable slope	PASS
PM FIRE SUPPRESSION SYSTEM		
●	5.1 Ensure fire suppression bottle and components are securely mounted and in good condition	N/A
●	5.2 Ensure fire suppression is correctly charged	N/A
●	5.3 Inspect last charge date - ACTUAL _____	N/A
●	5.4 Check all fire extinguishers are securely mounted and in good condition	PASS
●	5.5 Check all fire extinguishers are correctly charged	PASS
●	5.6 Inspect last charge date - ACTUAL _____	PASS
PM ENGINE		
●	6.1 Perform engine valve set	N/A

● 6.2 Inspect air intake system hoses, pipes, clamps for signs of dirt ingress	PASS
● 6.3 Inspect engine for oil or fuel leaks	PASS
● 6.4 Inspect engine components for missing clamps	PASS
● 6.5 Inspect exhaust system for signs of leaks, loose bolts or missing clamps	PASS
● 6.6 Inspect turbo for security and signs of leaks	PASS
● 6.7 Inspect condition of exhaust lagging	PASS
● 6.8 Inspect engine mounts for condition and loose hardware	PASS
● 6.9 Inspect alternator mount condition and adjustment	PASS
● 6.10 Inspect wiring condition and security	PASS
● 6.11 Clean engine breather	PASS
● 6.12 Replace outer air filter	PASS
● 6.13 Inspect & adjust engine belts	PASS

#### PM ENGINE COOLING SYSTEM

● 7.1 Check coolant level	PASS
● 7.2 Check condition of radiator cap	PASS
● 7.3 Check condition of radiator core and blow out	PASS
● 7.4 Check cooling system for signs of leaks	PASS
● 7.5 Check hose and clamp condition	PASS

● 7.6 Inspect fan condition and operation	PASS
---	------

● 7.7 Inspect radiator and fan guard condition	PASS
--	------

#### PM SWING TRANSMISSION

● 8.1 Inspect swing transmission for signs of leaks	PASS
---	------

● 8.2 Inspect swing transmission oil level	PASS
--	------

#### PM HYDRAULIC SYSTEM

● 9.1 Check hydraulic oil level	PASS
---------------------------------	------

● 9.2 Inspect hydraulic cylinders for leaks and security	PASS
--	------

● 9.3 Inspect hydraulic hoses for leaks, damage, security	PASS
---	------

● 9.4 Inspect hydraulic pump condition, leaks, security	PASS
---	------

● 9.5 Check Pilot Accumulator operation as per OEM Maintenance Procedure - Test Boom Down Functionality with engine off	PASS
--	------

#### PM FINAL DRIVES

● 10.1 Inspect LHS final drive mount condition for leaks and security	PASS
---	------

● 10.2 Inspect LHS oil level and mag plug condition	PASS
---	------

● 10.3 Inspect RHS final drive mount condition for leaks and security	PASS
---	------

● 10.4 Inspect RHS oil level and mag plug condition	PASS
---	------

#### PM UNDERCARRIAGE

● 11.1 Inspect LHS track tension	PASS
----------------------------------	------

● 11.2 Inspect RHS track tension	PASS
----------------------------------	------

●	11.3 Inspect tracks for loose/missing bolts	PASS
●	11.4 Inspect load and carrier rollers for signs of leaks	PASS
●	11.5 Inspect idlers for signs of leaks	PASS
●	11.6 Inspect sprocket segments condition	PASS
●	11.7 Inspect track frame for cracks, lose or missing hardware	PASS
PM FRAME AND BODY		
●	12.1 Check panels for damage and security	PASS
●	12.2 Check access steps and walkway condition	PASS
●	12.3 Inspect boom condition – cracks, missing clamps, damaged pipes, excessive movement, lubrication	PASS
●	12.4 Inspect stick condition – cracks, missing clamps, damaged pipes, excessive movement, lubrication	PASS
●	12.5 Inspect quick hitch condition and operation	PASS
●	12.6 Inspect bucket condition – cracks, wear, damage, mounts	PASS
●	12.7 Inspect GET condition and hardware	PASS
PM ELECTRICAL SYSTEM		
●	13.1 Check battery condition	PASS
●	13.2 Check battery terminal condition	PASS
●	13.3 Check battery security	PASS

● 13.4 Check battery box drain is clear *PASS*

● 13.5 Check wiring condition and security *PASS*

#### PM GREASE SYSTEM

● 14.1 Check all points for acceptable lubrication *PASS*

● 14.2 Inspect grease system operation *PASS*

● 14.3 Check grease line condition *PASS*

● 14.4 Refill grease tank *N/A*

● 14.5 Lubricate bucket linkage *PASS*

● 14.6 Lubricate blade linkage *N/A*

● 14.7 Lubricate boom & stick linkage *PASS*

● 14.8 Lubricate swing bearing *PASS*

#### PM OPERATOR STATION

● 15.1 Check all doors for correct opening and closing adjustments and operation *PASS*

● 15.2 Inspect condition of door seals *PASS*

● 15.3 Check window glass and seal condition *PASS*

● 15.4 Check mirror condition and adjustments *PASS*

● 15.5 Fill window washer reservoir *PASS*

● 15.6 Inspect air con vents condition *PASS*

●	15.7 Inspect seat belt and mounting hardware	PASS
●	15.8 Inspect seat condition, operation and mounting	PASS
●	15.9 Replace cabin A/C filter	PASS
OIL SAMPLING		
●	16.1 Engine	PASS
●	16.2 Hydraulic System	PASS
●	16.3 LHS Final Drive	PASS
●	16.4 RHS Final Drive	PASS
●	16.5 Swing Transmission	PASS
●	16.6 Coolant	PASS
OIL AND FILTERS		
●	17.1 Replace engine oil	PASS
●	17.2 Replace engine oil filter	PASS
●	17.3 Replace primary fuel filter (water separator) element	PASS
●	17.4 Replace secondary fuel filter	PASS
●	17.5 Replace fuel system third filter	N/A
●	17.6 Replace outer air filter	PASS
●	17.7 Replace cab filter	PASS



●	17.8 Replace A/C filter	PASS
●	17.9 Replace hydraulic case drain filter	N/A
●	17.10 Replace hydraulic pilot filter	N/A
PM POST SERVICE INSPECTION CHECKS		
●	18.1 All inspections have been completed and rectified as required	PASS
●	18.2 All safety related defects have been repaired or reported	PASS
●	18.3 All defects have been noted and reported	PASS
●	18.4 All fluids are at correct level and drain plugs tight	PASS
●	18.5 All oil samples have visually been inspected and any notable signs of contamination have been reported	PASS
●	18.6 All replaced filters have been cut and inspected and photos added to CAT Inspect and reported to supervisor	PASS
●	18.7 Machine has been recommissioned and ready for operation	PASS
●	18.8 PM service notification marked off in Vision Link	COMPLETED
DEFECTS IDENTIFIED		
●	19.1 DEFECTS IDENTIFIED	PASS